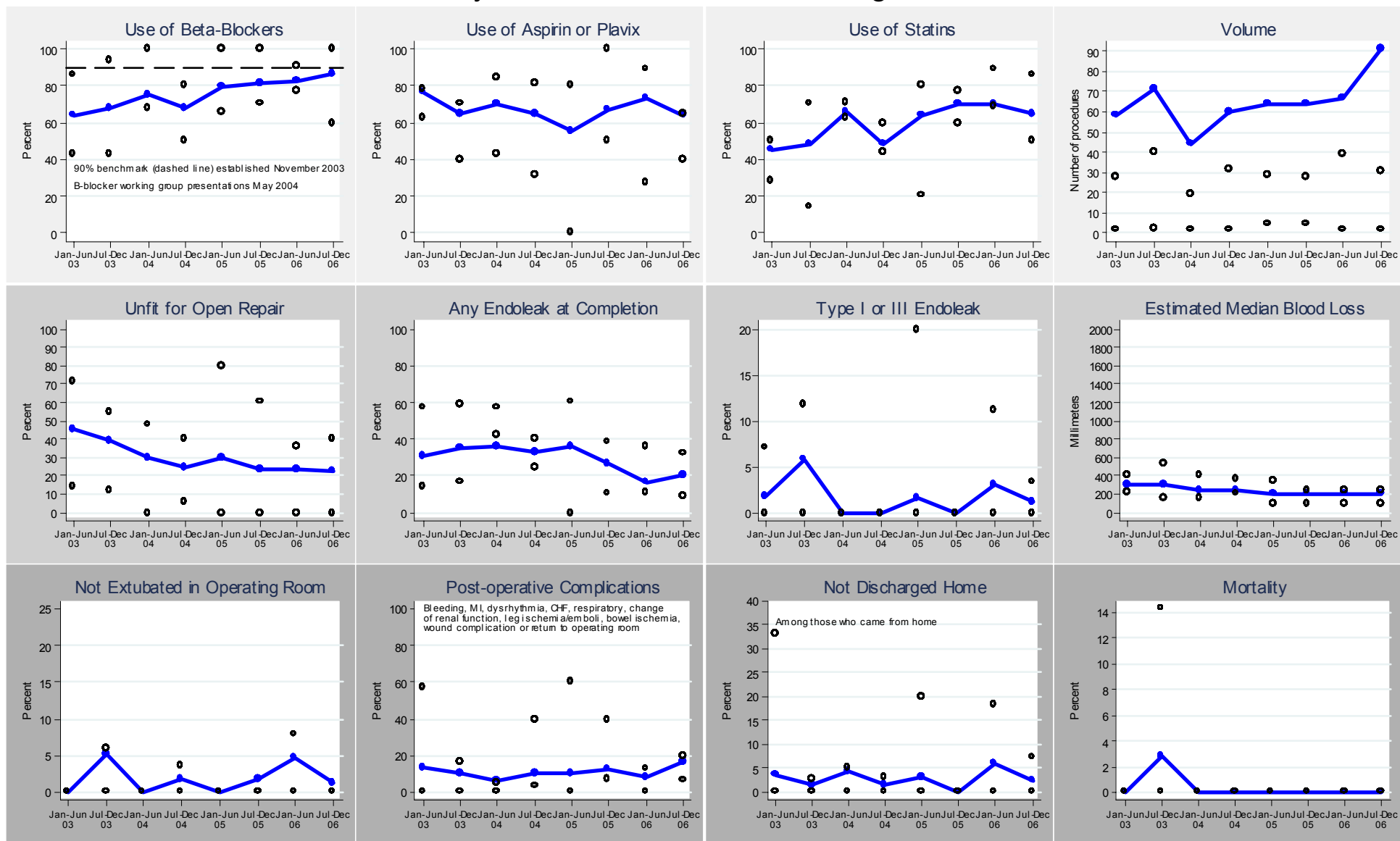


Endo Elective AAA Repair - VSGNNE

January 2003 - December 2006: Region, N=519



For VSGNNE May 4, 2007 meeting

Note: y-axes vary depending on the highest rate across all centers in any half year.

Circles show min/max (rate or median) by half-year and only if 5 or more procedures were done by center. The Volume graph shows actual counts.

Shading: **Pre-operative**; **Procedure**; **Outcomes**

Confidential – For Quality Assurance Use Only